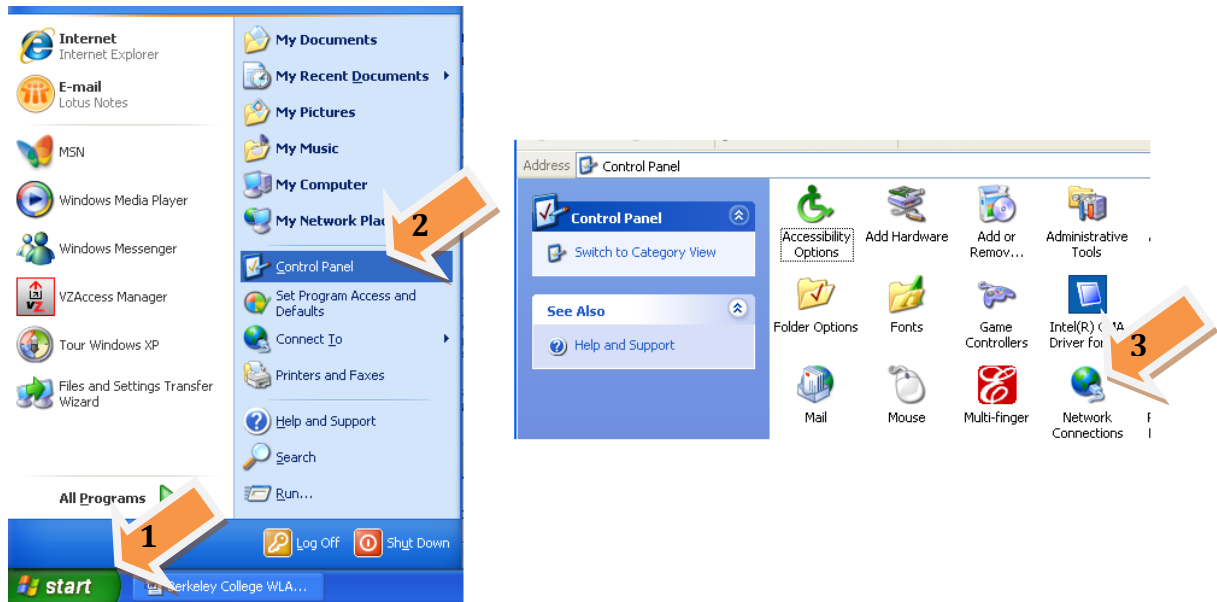
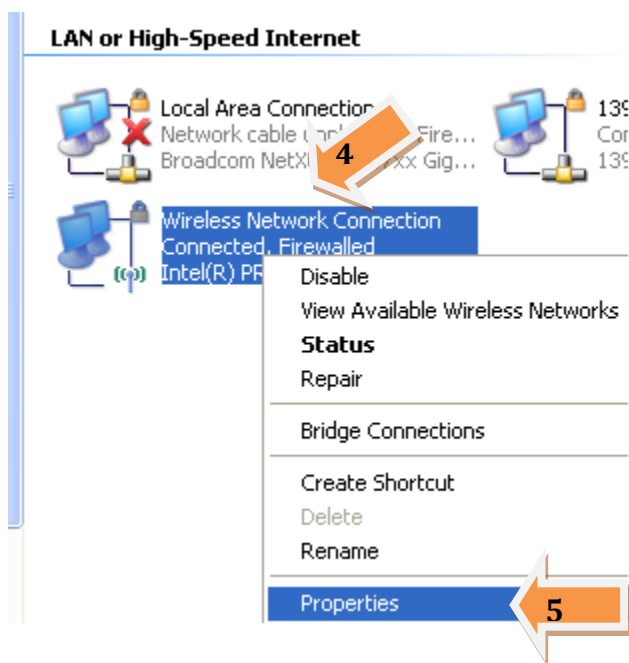


# Berkeley College Wireless Configuration for Windows XP

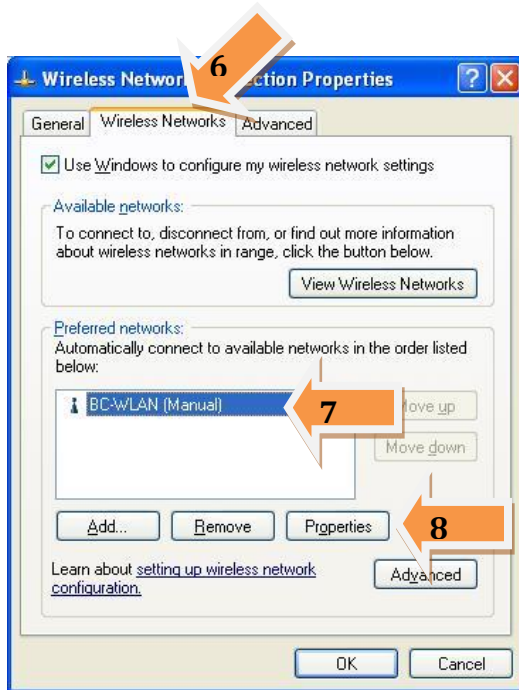
1. Open the properties of the wireless adapter. One way to do this is to click on the Start Button (1), click on Control Panel (2), and double click the Network Connections (3) icon in the control panel window



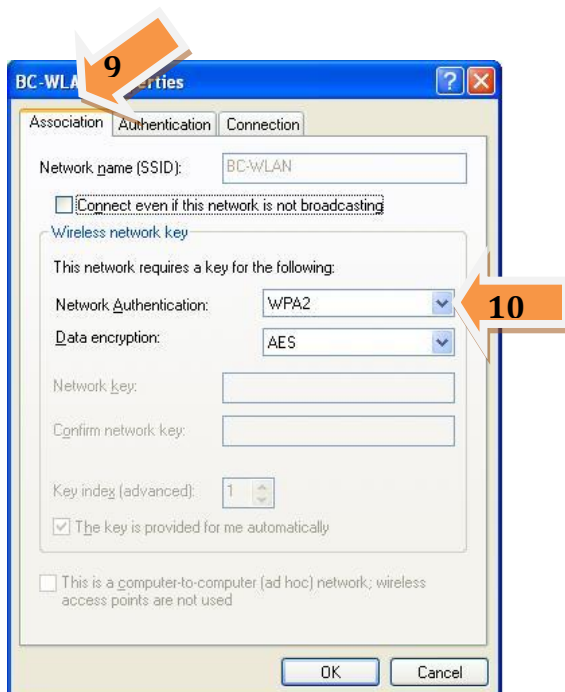
2. Right click on the wireless adapter (4) and click properties (5).



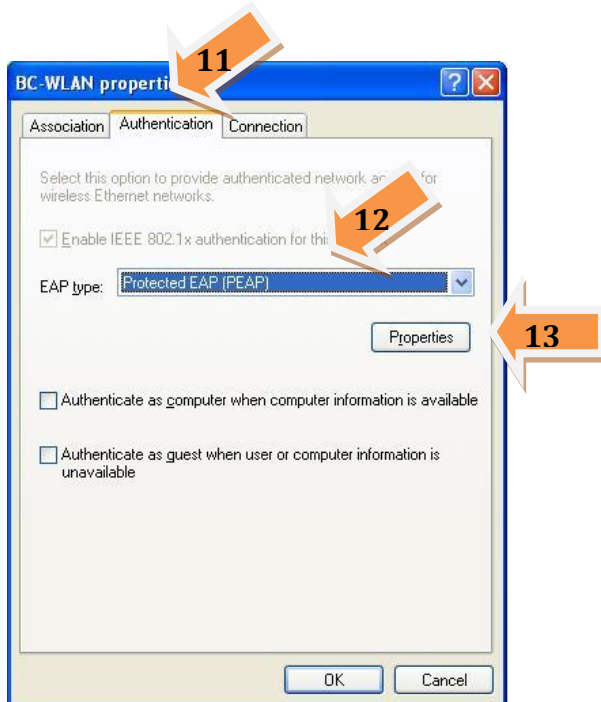
3. On the wireless adapter properties window click on the Wireless Networks tab(6), select BC-WLAN (7) and then click Properties (8)



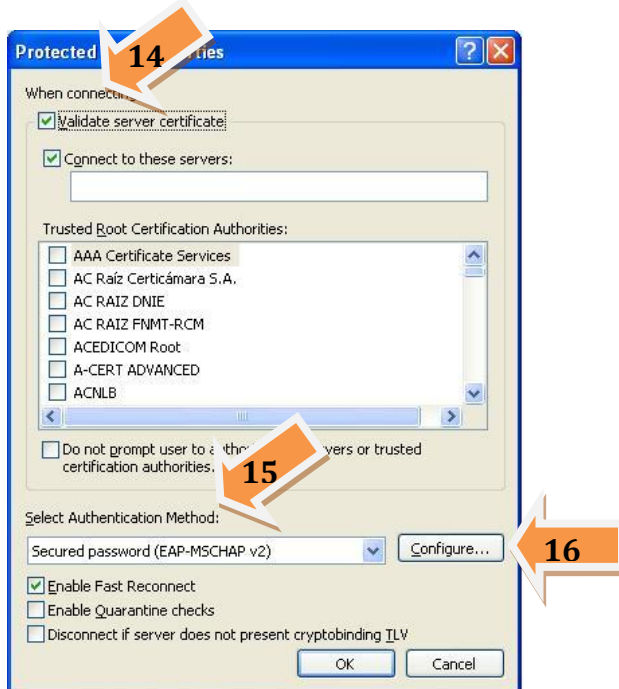
4. Click the Association tab (9), select WPA2 (10) in the Network Authentication dropdown box.



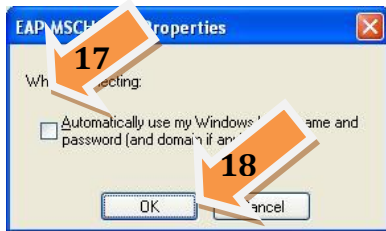
- Next click the Authentication tab (11) and select Protected EAP (PEAP) (12) in the EAP type dropdown box. Open the EAP Properties by clicking on the Properties button (13)



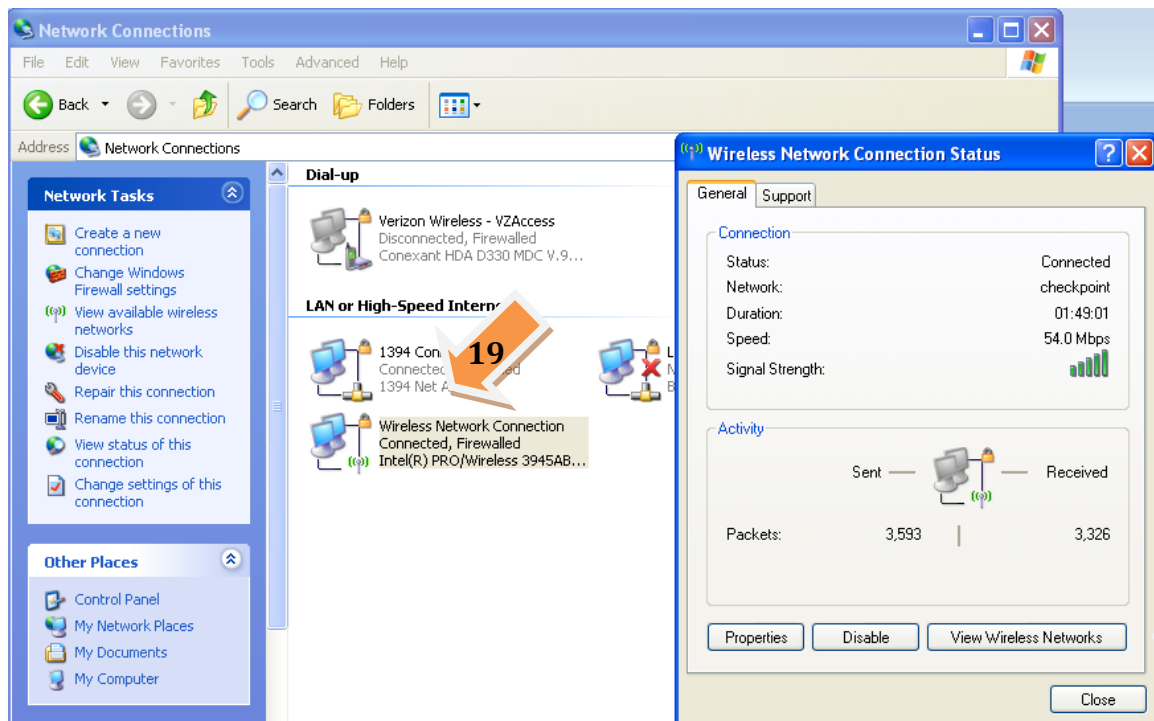
- Verify that the Validate Server Certificate checkbox (14) is checked. Next, select Secure password (EAP-MSCHAP v2) (15) in the Authentication Method dropdown box. Click Configure (16) to set the final settings.



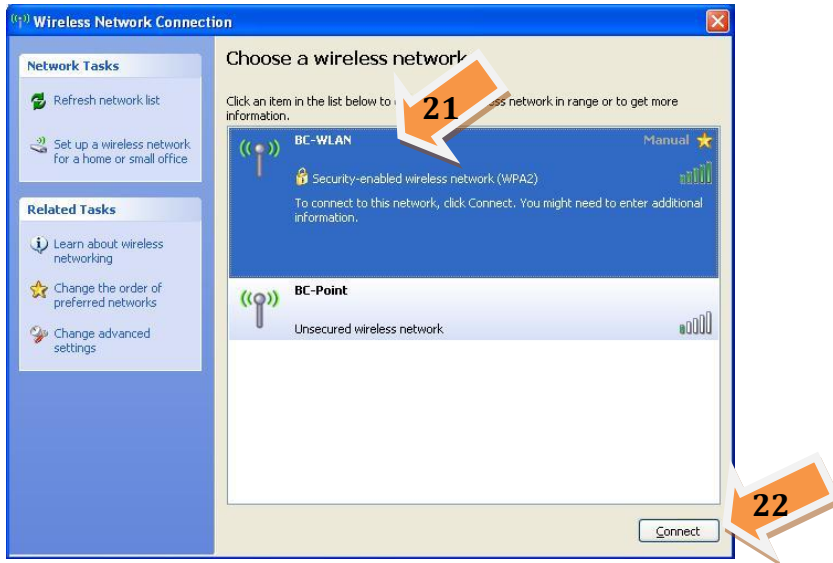
7. If you are connecting to the network as a Berkeley College student, verify the Automatically use Windows logon name and password checkbox (17) is **UNCHECKED**. If you are connecting to the network as a Berkeley College Faculty or Staff member, verify the Automatically use Windows logon name and password checkbox (17) is **CHECKED**. Click OK (18)



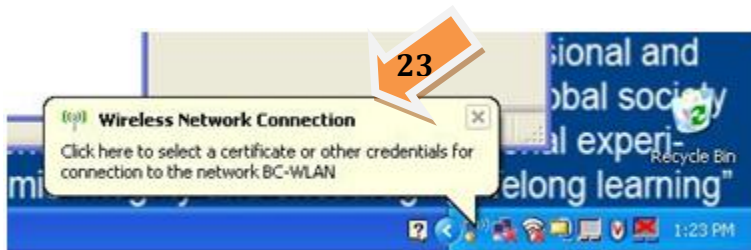
8. Next click the **OK** button on all open dialog boxes. In the Network Connections window double click the Wireless Network Connection (19). On the properties window click the View Wireless Networks button (20).



9. Next select BC-WLAN (21) in the wireless network list and click Connect (22)



10. Next click the Message Bubble (23) if you see this message popup.



11. **IF** you see the following dialog box, enter your Berkeley College network User name, Password, and BERKELEY in the Domain textbox (24). Click OK (25)



12. Click OK (26) to accept the Berkeley College wireless network certificate.



13. You are now connected to the Berkeley College wireless network! If you continue to have trouble connecting to the wireless network, contact the **Berkeley College IS Helpdesk at 973-278-5400 Ext: 1540** for assistance.